

# The OmicCircos usages by examples

Ying Hu and Chunhua Yan

April 24, 2017

## Contents

|          |                              |          |
|----------|------------------------------|----------|
| <b>1</b> | <b>Introduction</b>          | <b>2</b> |
| <b>2</b> | <b>Input file formats</b>    | <b>2</b> |
| 2.1      | segment data . . . . .       | 2        |
| 2.2      | mapping data . . . . .       | 2        |
| 2.3      | link data . . . . .          | 3        |
| 2.4      | link polygon data . . . . .  | 3        |
| <b>3</b> | <b>The package functions</b> | <b>3</b> |
| 3.1      | sim.circos . . . . .         | 3        |
| 3.2      | segAnglePo . . . . .         | 5        |
| 3.3      | circos . . . . .             | 6        |
| <b>4</b> | <b>Plotting parameters</b>   | <b>6</b> |
| 4.1      | basic plotting . . . . .     | 6        |
| 4.2      | annotation . . . . .         | 12       |
| 4.3      | label . . . . .              | 13       |
| 4.4      | heatmap . . . . .            | 16       |

# 1 Introduction

The OmicCircos package generates high-quality circular plots for visualizing variations in omics data. The data can be gene or chromosome position-based values from mutation, copy number, expression, and methylation analyses. This package is capable of displaying variations in scatterplots, lines, and text labels. The relationships between genomic features can be presented in the forms of polygons and curves. By utilizing the statistical and graphic functions in R/Bioconductor environment, OmicCircos is also able to draw boxplots, histograms, and heatmaps from multiple sample data. Each track is drawn independently, which allows the use to optimize the track quickly and easily.

In this vignette, we will introduce the package plotting functions using simulation data and TCGA gene expression and copy number variation (cnv) data (<http://www.cancergenome.nih.gov/>).

A quick way to load the vignette examples is:

```
1 vignette("OmicCircos")
```

## 2 Input file formats

Four input data files are used in the package: segment data, mapping data, link data and link polygon data. Segment data are required to draw the anchor circular track. The remaining three data sets are used to draw additional tracks or connections.

### 2.1 segment data

The **segment data** lay out the foundation of a circular graph and typically are used to draw the outmost anchor track. In the segment data, column 1 should be the segment or chromosome names. Columns 2 and 3 are the start and end positions of the segment. Columns 4 and 5 are optional which can contain additional description of the segment. The package comes with the segment data for human (hg18 and hg19) and mouse (mm9 and mm10). Let's start by loading the package

```
1 options(stringsAsFactors = FALSE);
2 library(OmicCircos);
3 ## input hg19 cytogenetic band data
4 data(UCSC.hg19.chr);
5 head(UCSC.hg19.chr);
```

|   | chrom | chromStart | chromEnd | name   | gieStain |
|---|-------|------------|----------|--------|----------|
| 1 | chr1  | 0          | 2300000  | p36.33 | gneg     |
| 2 | chr1  | 2300000    | 5300000  | p36.32 | gpos25   |
| 3 | chr1  | 5300000    | 7100000  | p36.31 | gneg     |
| 4 | chr1  | 7100000    | 9200000  | p36.23 | gpos25   |
| 5 | chr1  | 9200000    | 12600000 | p36.22 | gneg     |
| 6 | chr1  | 12600000   | 16100000 | p36.21 | gpos50   |

### 2.2 mapping data

The **mapping data** are an R data frame which includes values to be drawn in the graph. In the mapping data, columns 1 and 2 are segment name and position respectively. Column 3 and beyond is optional which can be the value or name. In the following example, the third column is the gene symbol. Column 4 and 5 are the gene expression values for each sample.

```
1 options(stringsAsFactors = FALSE);
2 # load the OmicCircos-package
```

```

3 library(OmicCircos);
4 ## TCGA gene expression data
5 data(TCGA.BC.gene.exp.2k.60);
6 head(TCGA.BC.gene.exp.2k.60[,c(1:5)]);

```

|  | chr | po | NAME      | TCGA.A1.AOSK.01A | TCGA.A1.AOSO.01A |        |
|--|-----|----|-----------|------------------|------------------|--------|
|  | 282 | 10 | 122272906 | PPAPDC1A         | -0.809           | 0.224  |
|  | 363 | 15 | 46973079  | SHC4             | -0.704           | 3.656  |
|  | 456 | 19 | 63014177  | ZNF552           | -3.116           | 0.417  |
|  | 15  | 1  | 67590402  | IL12RB2          | 3.420            | 4.054  |
|  | 381 | 16 | 8750130   | ABAT             | -3.165           | -1.880 |
|  | 238 | 8  | 87486702  | WWP1             | -1.713           | -2.314 |

## 2.3 link data

The `link data` are for drawing curves between two anchor points. In the link data, columns 1, 2, 3 are the segment name, position, label of the first anchor point; columns 4, 5, 6 are segment name, position, label of the second anchor point Column 7 is optional and could be used for the link type description.

```

1 options(stringsAsFactors = FALSE);
2 # load the OmicCircos-package
3 library(OmicCircos);
4 ## TCGA fusion gene data
5 data(TCGA.BC.fus);
6 head(TCGA.BC.fus[,c(1:6)]);

```

|   | chr1 | po1      | gene1    | chr2 | po2       | gene2    |
|---|------|----------|----------|------|-----------|----------|
| 1 | 2    | 63456333 | WDPCP    | 10   | 37493749  | ANKRD30A |
| 2 | 18   | 14563374 | PARD6G   | 21   | 14995400  | POTED    |
| 3 | 10   | 37521495 | ANKRD30A | 3    | 49282645  | CCDC36   |
| 4 | 10   | 37521495 | ANKRD30A | 7    | 100177212 | LRCH4    |
| 5 | 18   | 18539803 | ROCK1    | 18   | 112551    | PARD6G   |
| 6 | 12   | 4618159  | C12orf4  | 18   | 1514414   | PARD6G   |

## 2.4 link polygon data

The `link polygon data` are for connecting two segments with a polygon graph. In the link polygon data, columns 1, 2 and 3 are the name, start and end points for the first segment and columns 4, 5 and 6 are the name, start and end points for the second segment.

# 3 The package functions

There are three main functions in the package: `sim.circos`, `segAnglePo` and `circos`. `sim.circos` generates simulation data for drawing circular plots. `segAnglePo` converts the genomic (linear) coordinates (chromosome base pair positions) to the angle based coordinates along circumference. `circos` enables users to superimpose graphics on the circle track.

## 3.1 sim.circos

The `sim.circos` function generates four simulated input data files, which allows users to preview the graph quickly with different parameters and design an optimal presentation with desired features. In the following example, there are 10 segments, 10 individuals, 10 links, and 10 link polygons. Each segment has the value

ranging from 20 to 50. The values will be generated by  $rnorm(1) + i$ . The  $i$  is the ordinal number of the segments. The values are increased by the segment order.

```

1 options(stringsAsFactors = FALSE);
2 # load the OmicCircos-package
3 library(OmicCircos);
4 # set up the initial parameters
5 seg.num      ← 10;
6 ind.num      ← 20;
7 seg.po       ← c(20:50);
8 link.num     ← 10;
9 link.pg.num  ← 10;
10 # run sim.circos function
11 sim.out      ← sim.circos(seg=seg.num, po=seg.po, ind=ind.num, link=link.num, link.pg
    =link.pg.num);
12 # display the data set names
13 names(sim.out)
14 # display the segment data
15 head(sim.out$seg.frame[,c(1:3)])

```

|   | seg.name | seg.Start | seg.End |
|---|----------|-----------|---------|
| 1 | chr1     | 0         | 1       |
| 2 | chr1     | 1         | 2       |
| 3 | chr1     | 2         | 3       |
| 4 | chr1     | 3         | 4       |
| 5 | chr1     | 4         | 5       |
| 6 | chr1     | 5         | 6       |

```

1 # display the mapping data
2 head(sim.out$seg.mapping[,c(1:5)])

```

|   | seg.name | seg.po | name1  | name2  | name3  |
|---|----------|--------|--------|--------|--------|
| 1 | chr1     | 1      | 0.441  | 2.309  | 2.352  |
| 2 | chr1     | 2      | 0.235  | 1.712  | -0.399 |
| 3 | chr1     | 3      | -0.369 | 5.061  | 1.261  |
| 4 | chr1     | 4      | 0.379  | -0.167 | 1.413  |
| 5 | chr1     | 5      | 0.818  | 0.554  | 0.303  |
| 6 | chr1     | 6      | -0.569 | 0.7    | 1.413  |

```

1 # display the linking data
2 head(sim.out$seg.link)

```

|   | seg1 | po1 | name1 | seg2 | po2 | name2 | name3 |
|---|------|-----|-------|------|-----|-------|-------|
| 1 | chr9 | 25  | n1    | chr8 | 6   | n1    | n1    |
| 2 | chr7 | 9   | n2    | chr6 | 28  | n2    | n2    |
| 3 | chr6 | 17  | n3    | chr6 | 28  | n3    | n3    |
| 4 | chr4 | 28  | n4    | chr8 | 14  | n4    | n4    |
| 5 | chr3 | 4   | n5    | chr3 | 40  | n5    | n5    |
| 6 | chr6 | 14  | n6    | chr5 | 3   | n6    | n6    |

```

1 # display the linking polygon data
2 head(sim.out$seg.link.pg)

```

|   | seg1  | start1 | end1 | seg2  | start2 | end2 |
|---|-------|--------|------|-------|--------|------|
| 1 | chr10 | 22     | 24   | chr3  | 42     | 46   |
| 2 | chr10 | 3      | 24   | chr8  | 14     | 22   |
| 3 | chr10 | 8      | 19   | chr4  | 12     | 11   |
| 4 | chr1  | 24     | 13   | chr10 | 12     | 20   |
| 5 | chr3  | 4      | 29   | chr6  | 45     | 1    |
| 6 | chr10 | 3      | 7    | chr5  | 36     | 6    |

## 3.2 segAnglePo

The `segAnglePo` function converts the segment pointer positions (linear coordinates) into angle values (the angle based coordinates along circumference) and returns a data frame. It specifies the circle size, number of segments, and segment length.

```

1 library(OmicCircos);
2 options(stringsAsFactors = FALSE);
3 set.seed(1234);
4 ## initial values for simulation data
5 seg.num ← 10;
6 ind.num ← 20;
7 seg.po ← c(20:50);
8 link.num ← 10;
9 link.pg.num ← 4;
10 ## output simulation data
11 sim.out ← sim.circos(seg=seg.num, po=seg.po, ind=ind.num, link=link.num,
12 link.pg=link.pg.num);
13 seg.f ← sim.out$seg.frame;
14 seg.v ← sim.out$seg.mapping;
15 link.v ← sim.out$seg.link
16 link.pg.v ← sim.out$seg.link.pg
17 seg.num ← length(unique(seg.f[,1]));
18 ## select segments
19 seg.name ← paste("chr", 1:seg.num, sep="");
20 db ← segAnglePo(seg.f, seg=seg.name);

```

|       | seg.name | angle.start | angle.end | seg.sum.start | seg.sum.end | seg.start |
|-------|----------|-------------|-----------|---------------|-------------|-----------|
| [1,]  | "chr1"   | "270"       | "294.984" | "0"           | "23"        | "0"       |
| [2,]  | "chr2"   | "296.984"   | "333.917" | "23"          | "57"        | "0"       |
| [3,]  | "chr3"   | "335.917"   | "385.885" | "57"          | "103"       | "0"       |
| [4,]  | "chr4"   | "387.885"   | "423.732" | "103"         | "136"       | "0"       |
| [5,]  | "chr5"   | "425.732"   | "462.665" | "136"         | "170"       | "0"       |
| [6,]  | "chr6"   | "464.665"   | "499.425" | "170"         | "202"       | "0"       |
| [7,]  | "chr7"   | "501.425"   | "524.236" | "202"         | "223"       | "0"       |
| [8,]  | "chr8"   | "526.236"   | "568.601" | "223"         | "262"       | "0"       |
| [9,]  | "chr9"   | "570.601"   | "603.188" | "262"         | "292"       | "0"       |
| [10,] | "chr10"  | "605.188"   | "628"     | "292"         | "313"       | "0"       |

|      | seg.end |
|------|---------|
| [1,] | "23"    |
| [2,] | "34"    |
| [3,] | "46"    |
| [4,] | "33"    |
| [5,] | "34"    |
| [6,] | "32"    |
| [7,] | "21"    |
| [8,] | "39"    |

```
[9,] "30"
[10,] "21"
```

In the above example, there are 10 segments in a circle. Column 1 is segment name. Columns 2, 3 are the start and end angles of the segment. Column 4 and 5 are the accumulative start and end positions. Column 6 and 7 are the start and end position for the segment. The plotting is clockwise starting at 12 o'clock (270 degree).

### 3.3 circos

The `circos` is the main function to draw different shapes of the circle. For example, expression and CNV data can be viewed using basic shapes like scatterplots and lines while structural variations such as translocations and fusion proteins can be viewed using curves and polygons to connect different segments. Additionally, multiple sample expression and CNV data sets can be displayed as boxplots, histograms, or heatmaps using standard R functions such as `apply`. The usage of this function is illustrated in the next section.

## 4 Plotting parameters

### 4.1 basic plotting

The input data sets were generated by `texttttsim.circos` function.

```
1 options(stringsAsFactors = FALSE);
2 library(OmicCircos);
3 options(stringsAsFactors = FALSE);
4 set.seed(1234);
5
6 # initial
7 seg.num    <- 10;
8 ind.num    <- 20;
9 seg.po     <- c(20:50);
10 link.num   <- 10;
11 link.pg.num <- 4;
12
13 sim.out <- sim.circos(seg=seg.num, po=seg.po, ind=ind.num, link=link.num,
14   link.pg=link.pg.num);
15
16 seg.f     <- sim.out$seg.frame;
17 seg.v     <- sim.out$seg.mapping;
18 link.v    <- sim.out$seg.link
19 link.pg.v <- sim.out$seg.link.pg
20 seg.num   <- length(unique(seg.f[,1]));
21
22 # name segment (option)
23 seg.name <- paste("chr", 1:seg.num, sep="");
24 db      <- segAnglePo(seg.f, seg=seg.name);
25 # set transparent colors
26 colors  <- rainbow(seg.num, alpha=0.5);
```

To get perfect circle, the output figure should be in square. The output file is the same width and height. The same line values are in the margin of the graphical parameters.

```
1 par(mar=c(2, 2, 2, 2));
2 plot(c(1,800), c(1,800), type="n", axes=FALSE, xlab="", ylab="", main="");
3
```

```

4 circos(R=400, cir=db, type="chr", col=colors, print.chr.lab=TRUE, W=4, scale=TRUE);
5 circos(R=360, cir=db, W=40, mapping=seg.v, col.v=3, type="l", B=TRUE, col=colors
  [1], lwd=2, scale=TRUE);
6 circos(R=320, cir=db, W=40, mapping=seg.v, col.v=3, type="ls", B=FALSE, col=colors
  [9], lwd=2, scale=TRUE);
7 circos(R=280, cir=db, W=40, mapping=seg.v, col.v=3, type="lh", B=TRUE, col=colors
  [7], lwd=2, scale=TRUE);
8 circos(R=240, cir=db, W=40, mapping=seg.v, col.v=19, type="ml", B=FALSE, col=colors
  , lwd=2, scale=TRUE);
9 circos(R=200, cir=db, W=40, mapping=seg.v, col.v=19, type="ml2", B=TRUE, col=colors,
  lwd=2);
10 circos(R=160, cir=db, W=40, mapping=seg.v, col.v=19, type="ml3", B=FALSE, cutoff=5,
  lwd=2);
11 circos(R=150, cir=db, W=40, mapping=link.v, type="link", lwd=2, col=colors[c(1,7)]);
12 circos(R=150, cir=db, W=40, mapping=link.pg.v, type="link.pg", lwd=2, col=sample(
  colors, link.pg.num));

```

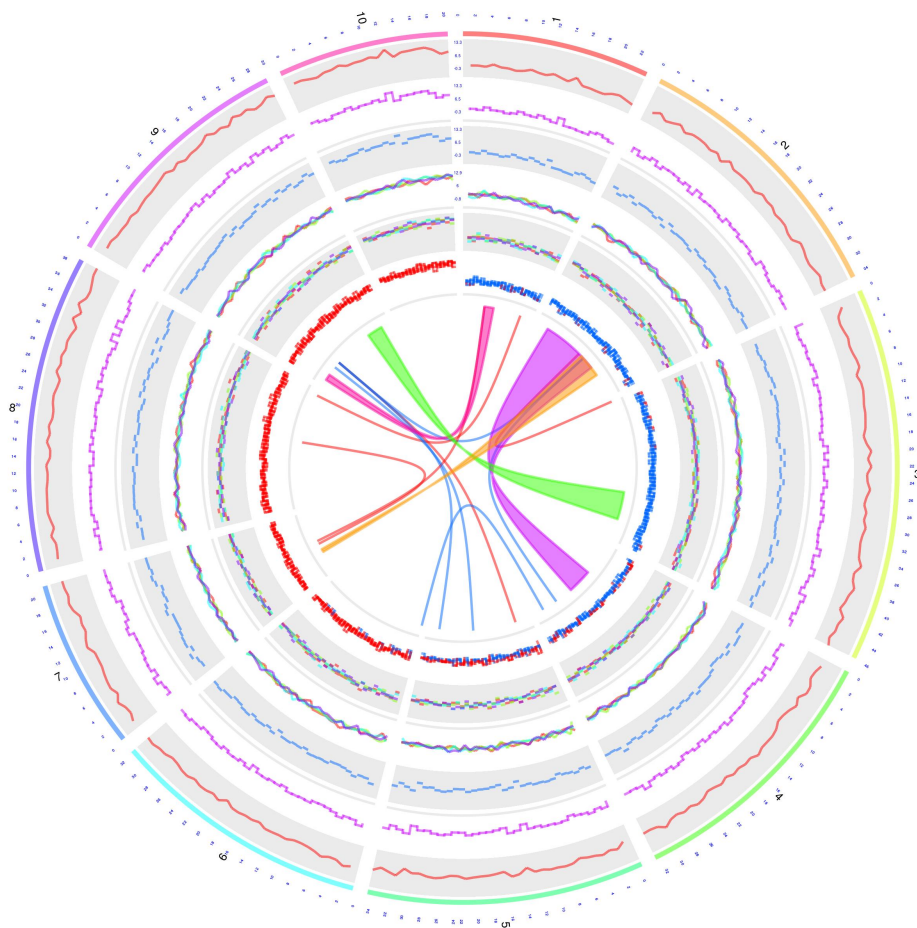


Figure 1

Figure 1 from outside to inside: Track 1 is lines; Track 2 is the stair steps; Track 3 is the horizontal lines; Tracks 4, 5 and 6 are the multiple lines, stair steps and horizontal lines for multiple the samples.

```

1 options(stringsAsFactors = FALSE);
2 library(OmicCircos);
3 set.seed(1234);
4
5 ## initial values for simulation data
6 seg.num ← 10;
7 ind.num ← 20;
8 seg.po ← c(20:50);
9 link.num ← 10;
10 link.pg.num ← 4;
11 ## output simulation data
12 sim.out ← sim.circos(seg=seg.num, po=seg.po, ind=ind.num, link=link.num,
13   link.pg=link.pg.num);
14
15 seg.f ← sim.out$seg.frame;
16 seg.v ← sim.out$seg.mapping;
17 link.v ← sim.out$seg.link
18 link.pg.v ← sim.out$seg.link.pg
19 seg.num ← length(unique(seg.f[,1]));
20
21 ## select segments
22 seg.name ← paste("chr", 1:seg.num, sep="");
23 db ← segAnglePo(seg.f, seg=seg.name);
24
25 colors ← rainbow(seg.num, alpha=0.5);

```

```

1 par(mar=c(2, 2, 2, 2));
2 plot(c(1,800), c(1,800), type="n", axes=FALSE, xlab="", ylab="", main="");
3
4 circos(R=400, type="chr", cir=db, col=colors, print.chr.lab=TRUE, W=4, scale=TRUE);
5 circos(R=360, cir=db, W=40, mapping=seg.v, col.v=8, type="box", B=TRUE, col=colors
6   [1], lwd=0.1, scale=TRUE);
7 circos(R=320, cir=db, W=40, mapping=seg.v, col.v=8, type="hist", B=TRUE, col=colors
8   [3], lwd=0.1, scale=TRUE);
9 circos(R=280, cir=db, W=40, mapping=seg.v, col.v=8, type="ms", B=TRUE, col=colors
10  [7], lwd=0.1, scale=TRUE);
11 circos(R=240, cir=db, W=40, mapping=seg.v, col.v=3, type="h", B=FALSE, col=colors
12  [2], lwd=0.1);
13 circos(R=200, cir=db, W=40, mapping=seg.v, col.v=3, type="s", B=TRUE, col=colors,
14   lwd=0.1);
15 circos(R=160, cir=db, W=40, mapping=seg.v, col.v=3, type="b", B=FALSE, col=colors,
16   lwd=0.1);
17 circos(R=150, cir=db, W=40, mapping=link.v, type="link", lwd=2, col=colors[c(1,7)]);
18 circos(R=150, cir=db, W=40, mapping=link.pg.v, type="link.pg", lwd=2, col=sample(
19   colors, link.pg.num));

```

Figure 2 from outside to inside: Track 1 is the boxplot for the samples from column 8 (col.v=8) to the last column in the data frame seg.v with the scale; Track 2 and track 3 are the histograms (in horizontal) and the scatter plots for multiple samples as track 1. Tracks 4, 5 and 6 are the histogram (in vertical), scatter plot and vertical line for just one sample (column 3 in the data frame seg.v).

```

1 options(stringsAsFactors = FALSE);
2 library(OmicCircos);
3 set.seed(1234);
4

```



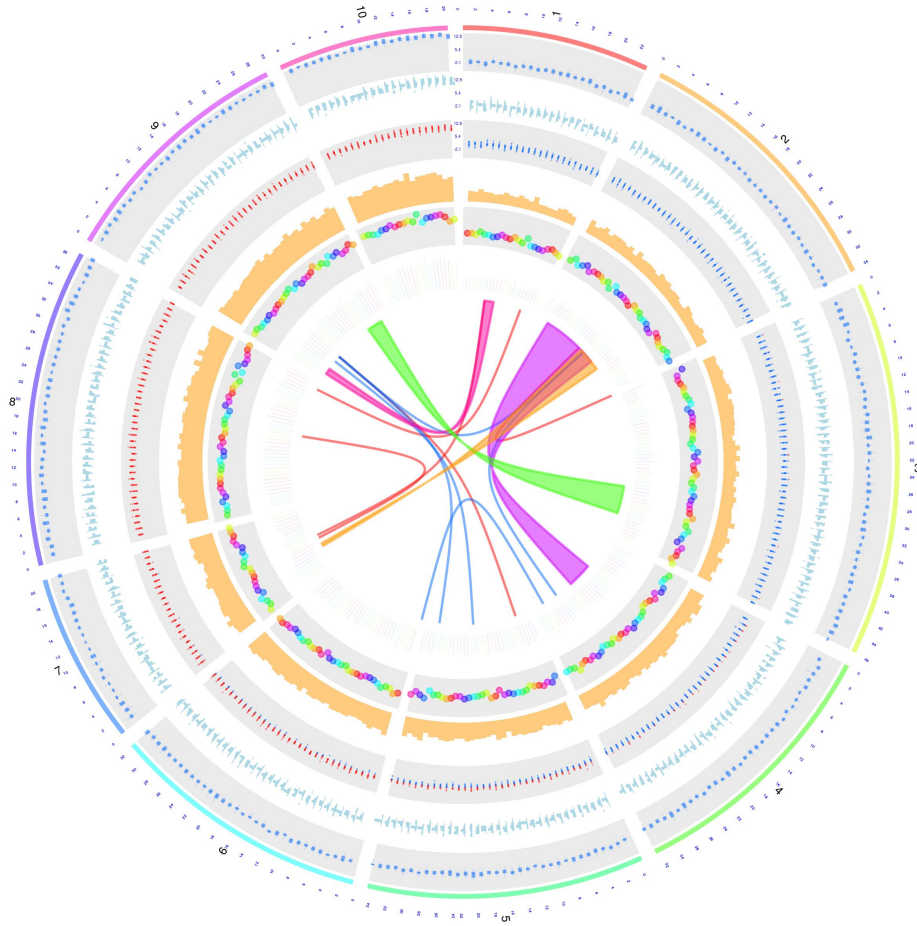


Figure 2

```

5 ## initial values for simulation data
6 seg.num      ← 10;
7 ind.num      ← 20;
8 seg.po       ← c(20:50);
9 link.num     ← 10;
10 link.pg.num  ← 4;
11 ## output simulation data
12 sim.out ← sim.circos(seg=seg.num, po=seg.po, ind=ind.num, link=link.num,
13   link.pg=link.pg.num);
14
15 seg.f       ← sim.out$seg.frame;
16 seg.v       ← sim.out$seg.mapping;
17 link.v      ← sim.out$seg.link
18 link.pg.v   ← sim.out$seg.link.pg
19 seg.num     ← length(unique(seg.f[,1]));
20
21 ##
22 seg.name    ← paste("chr", 1:seg.num, sep="");
23 db         ← segAnglePo(seg.f, seg=seg.name);
24
25 colors     ← rainbow(seg.num, alpha=0.5);

1 par(mar=c(2, 2, 2, 2));
2 plot(c(1,800), c(1,800), type="n", axes=FALSE, xlab="", ylab="", main="");
3
4 circos(R=400, type="chr", cir=db, col=colors, print.chr.lab=TRUE, W=4, scale=TRUE);
5 circos(R=360, cir=db, W=40, mapping=seg.v, col.v=8, type="quant90", B=FALSE, col=
6   colors, lwd=2, scale=TRUE);
7 circos(R=320, cir=db, W=40, mapping=seg.v, col.v=3, type="sv", B=TRUE, col=colors
8   [7], scale=TRUE);
9 circos(R=280, cir=db, W=40, mapping=seg.v, col.v=3, type="ss", B=FALSE, col=colors
10  [3], scale=TRUE);
11 circos(R=240, cir=db, W=40, mapping=seg.v, col.v=8, type="heatmap", lwd=3);
12 circos(R=200, cir=db, W=40, mapping=seg.v, col.v=3, type="s.sd", B=FALSE, col=colors
13  [4]);
14 circos(R=160, cir=db, W=40, mapping=seg.v, col.v=3, type="ci95", B=TRUE, col=colors
15  [4], lwd=2);
16 circos(R=150, cir=db, W=40, mapping=link.v, type="link", lwd=2, col=colors[c(1,7)]);
17 circos(R=150, cir=db, W=40, mapping=link.pg.v, type="link.pg", lwd=2, col=sample(
18  colors, link.pg.num));
19
20 the.col1=rainbow(10, alpha=0.5)[3];
21 highlight ← c(160, 410, 6, 2, 6, 10, the.col1, the.col1);
22 circos(R=110, cir=db, W=40, mapping=highlight, type="hl", lwd=1);
23
24 the.col1=rainbow(10, alpha=0.1)[3];
25 the.col2=rainbow(10, alpha=0.5)[1];
26 highlight ← c(160, 410, 3, 12, 3, 20, the.col1, the.col2);
27 circos(R=110, cir=db, W=40, mapping=highlight, type="hl", lwd=2);

```

Figure 3 from outside to inside: Track 1 is the three lines for quantile values for the samples from column 8 (col.v=8) to the last column in the data frame seg.v with the scale. The middle line is for the median, the outside line and the inside line are for 90% and the 10%, respectively; Track 2 is the circle points with the center=median and radius=variance; Track 3 is the circle plot with the center equal to the mean and scaled value (for example, the range from 0 to 3); Tracks 4 is the heatmap for the samples from column 8

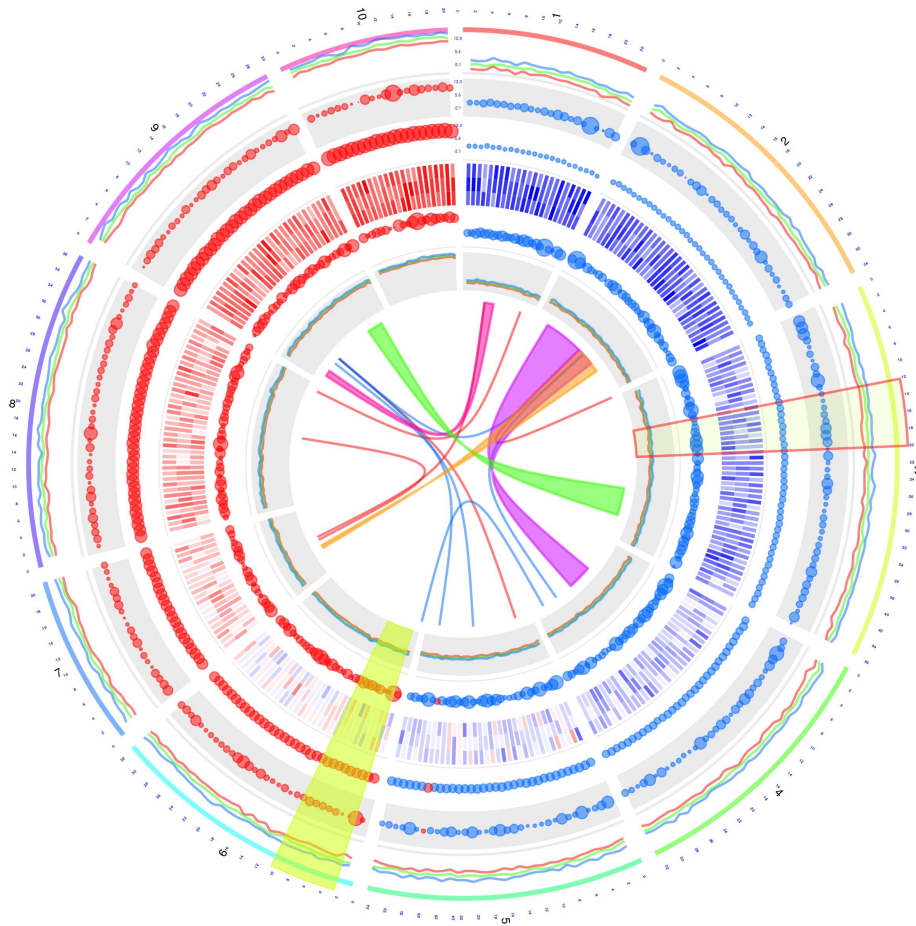


Figure 3

(col.v=8) to the last column in the data frame seg.v; Track 5 is the circle plot with the center=median and radius=standard deviation; Track 6 is the 95% confidence interval of the samples.

## 4.2 annotation

```

1 options(stringsAsFactors = FALSE);
2 library(OmicCircos);
3 set.seed(1234);
4
5 ## load mm cytogenetic band data
6 data("UCSC.mm10.chr", package="OmicCircos");
7 ref <- UCSC.mm10.chr;
8 ref[,1] <- gsub("chr", "", ref[,1]);
9 ## initial values for simulation data
10 colors <- rainbow(10, alpha=0.8);
11 lab.n <- 50;
12 cnv.n <- 200;
13 arc.n <- 30;
14 fus.n <- 10;
15
16 ## make arc data
17 arc.d <- c();
18 for (i in 1:arc.n){
19   chr <- sample(1:19, 1);
20   chr.i <- which(ref[,1]==chr);
21   chr.arc <- ref[chr.i,];
22   arc.i <- sample(1:nrow(chr.arc), 2);
23   arc.d <- rbind(arc.d, c(chr.arc[arc.i[1],c(1,2)], chr.arc[arc.i[2],c(2,4)]));
24 }
25 colnames(arc.d) <- c("chr", "start", "end", "value");
26
27 ## make fusion
28 fus.d <- c();
29 for (i in 1:fus.n){
30   chr1 <- sample(1:19, 1);
31   chr2 <- sample(1:19, 1);
32   chr1.i <- which(ref[,1]==chr1);
33   chr2.i <- which(ref[,1]==chr2);
34   chr1.f <- ref[chr1.i,];
35   chr2.f <- ref[chr2.i,];
36   fus1.i <- sample(1:nrow(chr1.f), 1);
37   fus2.i <- sample(1:nrow(chr2.f), 1);
38   n1 <- paste0("geneA", i);
39   n2 <- paste0("geneB", i);
40   fus.d <- rbind(fus.d, c(chr1.f[fus1.i,c(1,2)], n1, chr2.f[fus2.i,c(1,2)], n2));
41 }
42 colnames(fus.d) <- c("chr1", "po1", "gene1", "chr2", "po2", "gene2");
43
44 cnv.i <- sample(1:nrow(ref), cnv.n);
45 vale <- rnorm(cnv.n);
46 cnv.d <- data.frame(ref[cnv.i,c(1,2)], value=vale);

```

```

1 par(mar=c(2, 2, 2, 2));
2 plot(c(1,800), c(1,800), type="n", axes=FALSE, xlab="", ylab="");

```

```

3
4 circos(R=400, type="chr", cir="mm10", print.chr.lab=TRUE, W=4, scale=TRUE);
5 circos(R=340, cir="mm10", W=60, mapping=cnv.d, type="b3", B=TRUE, col=colors[7]);
6 circos(R=340, cir="mm10", W=60, mapping=cnv.d, type="s2", B=FALSE, col=colors[1],
  cex=0.5);
7 circos(R=280, cir="mm10", W=60, mapping=arc.d, type="arc2", B=FALSE, col=colors, lwd
  =10, cutoff=0);
8 circos(R=220, cir="mm10", W=60, mapping=cnv.d, col.v=3, type="b2", B=TRUE, cutoff=
  -0.2, col=colors[c(7,9)], lwd=2);
9 circos(R=160, cir="mm10", W=60, mapping=arc.d, col.v=4, type="arc", B=FALSE, col=
  colors[c(1,7)], lwd=4, scale=TRUE);
10 circos(R=150, cir="mm10", W=10, mapping=fus.d, type="link", lwd=2, col=colors[c
  (1,7,9)]);

```

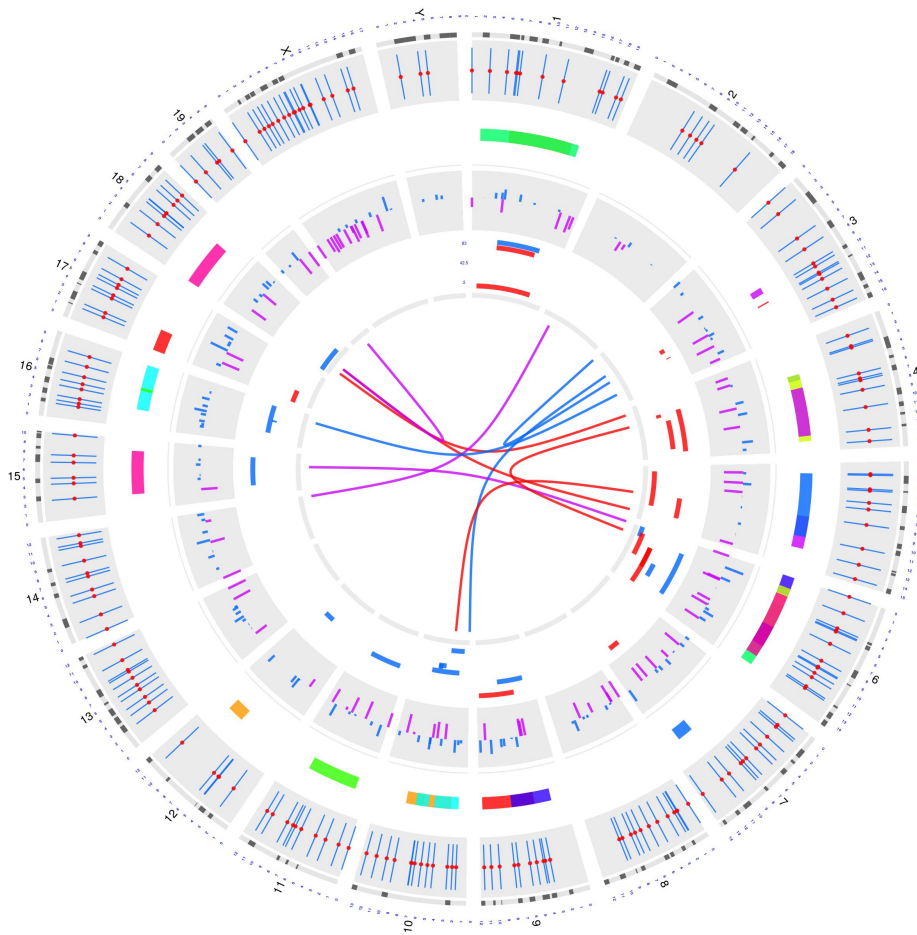


Figure 4

### 4.3 label

Figure 4 from outside to inside: Track 1 is the vertical lines with the same length and radius which can be used for the annotation of SNP positions; Track 2 is the arcs with the same radius which can be used for the

segment annotation, e.g. `cnv` (copy number variation); Track 3 is the barplot with positive and negative values; Track 4 is the arcs in the different radius.

```

1 options(stringsAsFactors = FALSE);
2 library(OmicCircos);
3
4 data("TCGA.PAM50_genefu_hg18");
5 data("TCGA.BC.fus");
6 data("TCGA.BC.cnv.2k.60");
7 data("TCGA.BC.gene.exp.2k.60");
8 data("TCGA.BC.sample60");
9 data("TCGA.BC_Her2_cnv_exp");
10
11 pvalue <- -1 * log10(TCGA.BC_Her2_cnv_exp[,5]);
12 pvalue <- cbind(TCGA.BC_Her2_cnv_exp[,c(1:3)], pvalue);
13
14 Her2.i <- which(TCGA.BC.sample60[,2] == "Her2");
15 Her2.n <- TCGA.BC.sample60[Her2.i,1];
16
17 Her2.j <- which(colnames(TCGA.BC.cnv.2k.60) %in% Her2.n);
18 cnv <- TCGA.BC.cnv.2k.60[,c(1:3, Her2.j)];
19 cnv.m <- cnv[,c(4:ncol(cnv))];
20 cnv.m[cnv.m > 2] <- 2;
21 cnv.m[cnv.m < -2] <- -2;
22 cnv <- cbind(cnv[,1:3], cnv.m);
23
24 Her2.j <- which(colnames(TCGA.BC.gene.exp.2k.60) %in% Her2.n);
25 gene.exp <- TCGA.BC.gene.exp.2k.60[,c(1:3, Her2.j)];
26 colors <- rainbow(10, alpha=0.5);

```

```

1 par(mar=c(2, 2, 2, 2));
2 plot(c(1,800), c(1,800), type="n", axes=FALSE, xlab="", ylab="");
3
4 circos(R=300, type="chr", cir="hg18", print.chr.lab=FALSE, W=4);
5 circos(R=310, cir="hg18", W=20, mapping=TCGA.PAM50_genefu_hg18, type="label",
6       side="out", col=c("black", "blue", "red"), cex=0.4);
7 circos(R=250, cir="hg18", W=50, mapping=cnv, col.v=4, type="ml3", B=FALSE, col=
8       colors[7], cutoff=0, scale=TRUE);
9 circos(R=200, cir="hg18", W=50, mapping=gene.exp, col.v=4, type="ml3", B=TRUE, col=
10      colors[3], cutoff=0, scale=TRUE);
11 circos(R=140, cir="hg18", W=50, mapping=pvalue, col.v=4, type="l", B=FALSE, col=
12      colors[1], scale=TRUE);
13 ## set fusion gene colors
14 cols <- rep(colors[7], nrow(TCGA.BC.fus));
15 col.i <- which(TCGA.BC.fus[,1]==TCGA.BC.fus[,4]);
16 cols[col.i] <- colors[1];
17 circos(R=132, cir="hg18", W=50, mapping=TCGA.BC.fus, type="link", col=cols, lwd=2);

```

Figure 5 is an example of adding outside labels.

```

1 par(mar=c(2, 2, 2, 2));
2 plot(c(1,800), c(1,800), type="n", axes=FALSE, xlab="", ylab="", main="");
3 circos(R=300, type="chr", cir="hg18", col=TRUE, print.chr.lab=FALSE, W=4);
4 circos(R=290, cir="hg18", W=20, mapping=TCGA.PAM50_genefu_hg18, type="label", side="
5       in", col=c("black", "blue"), cex=0.4);
6 circos(R=310, cir="hg18", W=50, mapping=cnv, col.v=4, type="ml3", B=TRUE, col=colors
7       [7], cutoff=0, scale=TRUE);

```

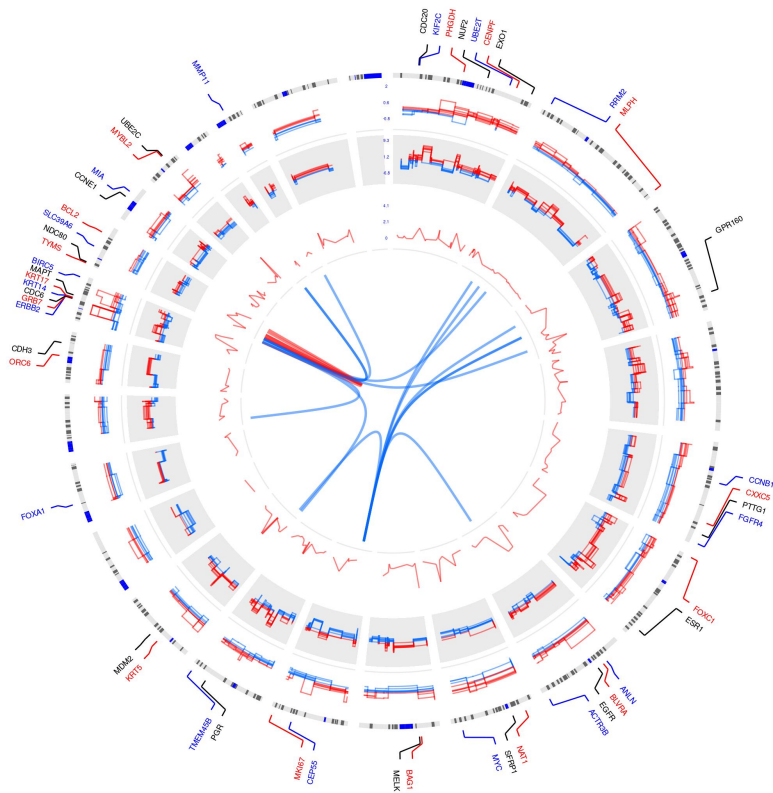


Figure 5

```

6 | circos(R=150, cir="hg18", W=50, mapping=gene.exp, col.v=4, type="ml3", B=TRUE, col=
  | colors[3], cutoff=0, scale=TRUE);
7 | circos(R=90, cir="hg18", W=50, mapping=pvalue, col.v=4, type="l", B=FALSE, col=
  | colors[1], scale=TRUE);
8 | circos(R=82, cir="hg18", W=50, mapping=TCGA.BC.fus, type="link", col=cols, lwd=2);

```

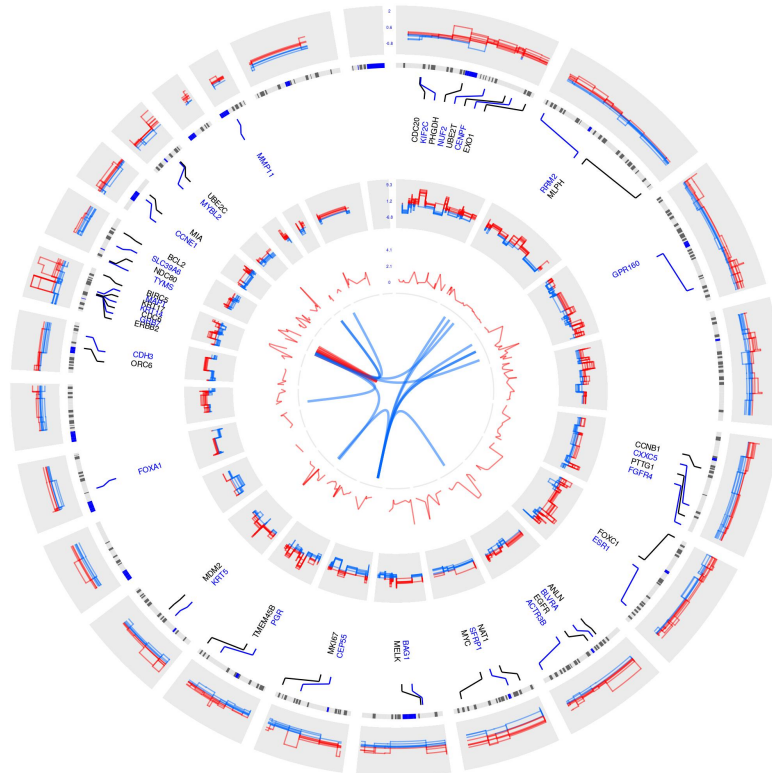


Figure 6

Figure 6 is an example of the inside labels.

#### 4.4 heatmap

```

1 | options(stringsAsFactors = FALSE);
2 | library(OmicCircos);
3 |
4 | data("TCGA.PAM50_genefu_hg18");
5 | data("TCGA.BC.fus");
6 | data("TCGA.BC.cnv.2k.60");
7 | data("TCGA.BC.gene.exp.2k.60");
8 | data("TCGA.BC.sample60");

```



```

9 data("TCGA.BC_Her2_cnv_exp");
10
11 pvalue ← -1 * log10(TCGA.BC_Her2_cnv_exp[,5]);
12 pvalue ← cbind(TCGA.BC_Her2_cnv_exp[,c(1:3)], pvalue);
13
14 Her2.i ← which(TCGA.BC.sample60[,2] == "Her2");
15 Her2.n ← TCGA.BC.sample60[Her2.i,1];
16
17 Her2.j ← which(colnames(TCGA.BC.cnv.2k.60) %in% Her2.n);
18 cnv ← TCGA.BC.cnv.2k.60[,c(1:3, Her2.j)];
19 cnv.m ← cnv[,c(4:ncol(cnv))];
20 cnv.m[cnv.m > 2] ← 2;
21 cnv.m[cnv.m < -2] ← -2;
22 cnv ← cbind(cnv[,1:3], cnv.m);
23
24 Her2.j ← which(colnames(TCGA.BC.gene.exp.2k.60) %in% Her2.n);
25 gene.exp ← TCGA.BC.gene.exp.2k.60[,c(1:3, Her2.j)];
26
27 colors ← rainbow(10, alpha=0.5);

1 par(mar=c(2, 2, 2, 2));
2
3 plot(c(1,800), c(1,800), type="n", axes=FALSE, xlab="", ylab="", main="");
4
5 circos(R=400, cir="hg18", W=4, type="chr", print.chr.lab=TRUE, scale=TRUE);
6 circos(R=300, cir="hg18", W=100, mapping=gene.exp, col.v=4, type="heatmap2",
7       cluster=TRUE, col.bar=TRUE, lwd=0.1, col="blue");
8 circos(R=220, cir="hg18", W=80, mapping=cnv, col.v=4, type="ml3", B=FALSE, lwd
9       =1, cutoff=0);
10 circos(R=140, cir="hg18", W=80, mapping=pvalue, col.v=4, type="l", B=TRUE,
11       lwd=1, col=colors[1]);
12
13 cols ← rep(colors[7], nrow(TCGA.BC.fus));
14 col.i ← which(TCGA.BC.fus[,1]==TCGA.BC.fus[,4]);
15 cols[col.i] ← colors[1];
16 circos(R=130, cir="hg18", W=10, mapping=TCGA.BC.fus, type="link2", lwd=2, col=cols)
17 ;

```

Figure 7: An example of a circular plots generated by OmicCircos showing the expression, CNV and fusion protein in 15 Her2 subtype samples from TCGA Breast Cancer data. Circular tracks from outside to inside: genome positions by chromosomes (black lines are cytobands); expression heatmap (red: up-regulated; blue: down-regulated); CNVs (red: gain; blue: loss); correlation p values between expression and CNVs; fusion genes.

